

---

# SonarWiz Quarterly Highlights - 2017 Q2

*Revision 1.0, 7/19/2017*

Chesapeake Technology, Inc.

eMail: [support@chesapeaketech.com](mailto:support@chesapeaketech.com)

Main Web site: <http://www.chesapeaketech.com>

Support Web site: <http://www.chestech-support.com>

1605 W. El Camino Real, Suite 100  
Mountain View, CA 94040

Tel: 650-967-2045

Fax: 650-450-9300



## Table of Contents

1	2017 - Q2 - SonarWiz - Enhancements Counts - (April-May-June 2017).....	3
2	Categorized SonarWiz Enhancements – 2017 Q2.....	4
2.1	SonarWiz 7 - New Integrated 3D Viewer.....	5
2.2	High-resolution Sidescan Import Data Format Support.....	7
2.3	SonarWiz 7 - Visible PROPERTIES control / viewing dialog.....	8
2.4	Seabed Classification - totally revised in SonarWiz 7 .....	10
2.5	Single-Beam - New import and real-time support data format .....	11
3	Learning More.....	12

**1 2017 - Q2 - SonarWiz - Enhancements Counts - (April-May-June 2017)**

<b>Functional Category</b>	<b>Enhancements Count</b>
2.1 SonarWiz 7 News !	6
2.2 General Enhancements	10
2.3 Sidescan post-processing	2
2.4 Real-time Data Acquisition	2
2.5 Bathymetry post-processing	1
2.6 Sub-bottom post-processing	1

## 2 Categorized SonarWiz Enhancements – 2017 Q2

Here are the highlights of SonarWiz enhancements for 2017 Q2 (April, May, June).

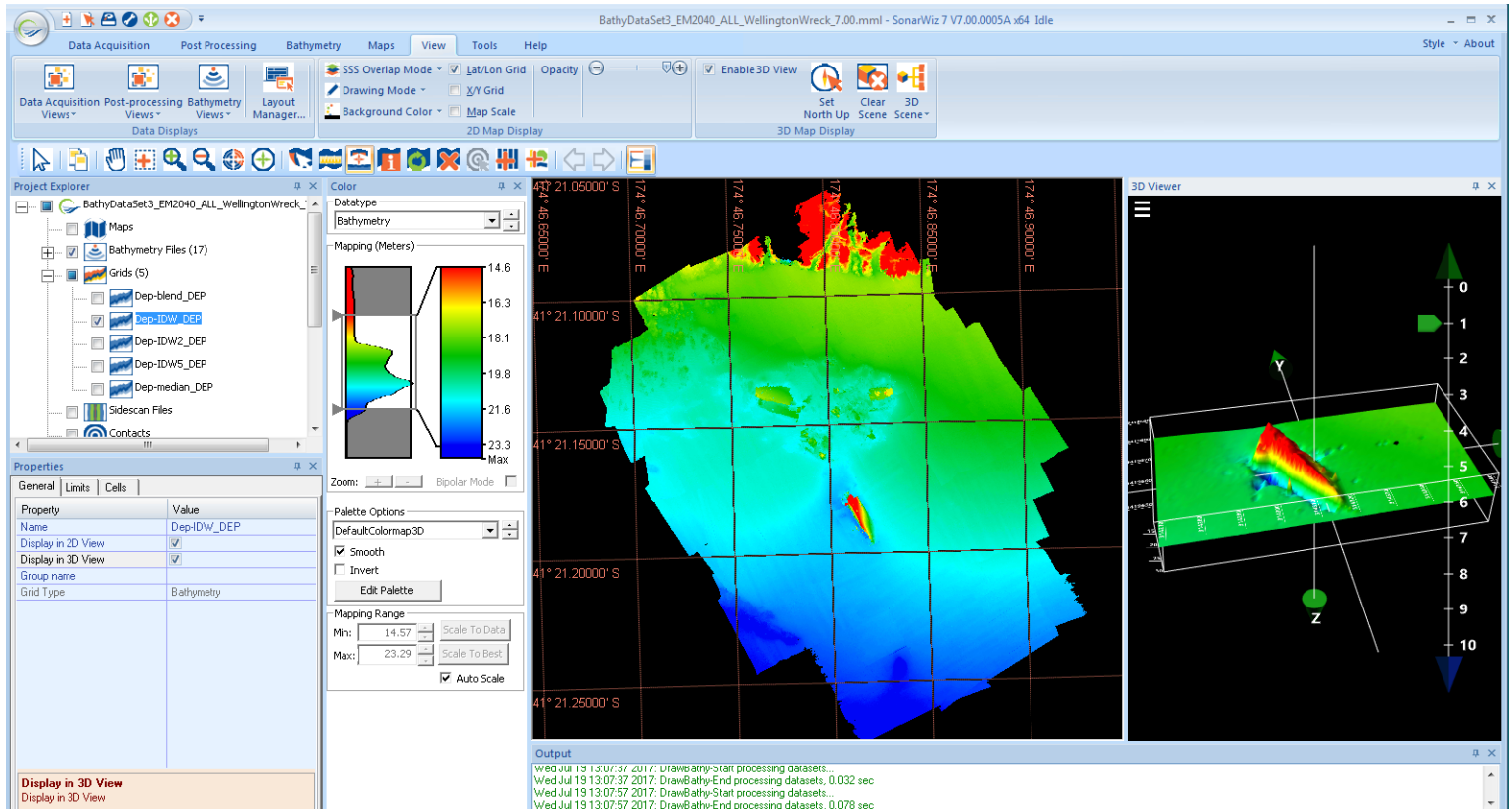
### Highlights Summary Table (blue items have companion graphics)

Section - Functional Category	Highlight Description
<p>2.1 SonarWiz 7 news !</p> <p>Production-version SonarWiz 7.00.0001 was released 6/30/2017.</p> <p>Any new SonarWiz customer, or existing customer with a current EMA on their license key as of 7/1/2017, can run SonarWiz 7.</p>	<p>It's HERE!</p> <ol style="list-style-type: none"> <li>1. SonarWiz 7 - fully integrated 3D viewer option supports display of post-processed imagery, or real-time imagery, for sidescan, sub-bottom, single-beam, or multi-beam data. 3D scene data selection is independent of the 2D map view content, but is visible right alongside it.</li> <li>2. SonarWiz 7 - sidescan data format is enhanced to full 32-bit floating-point resolution capability, making the import and view cycle easier than ever.</li> <li>3. SonarWiz 7 - The new Properties window provides direct visual access to project and project explorer item settings and controls, visible at the top GUI level, without having to open a secondary dialog. Now see your project information, file information, adjust gains, and control 2D and 3D viewing of project data, directly in the new Properties window.</li> <li>4. SonarWiz 7 - Seabed classification feature set has been completely renovated!</li> <li>5. SonarWiz7 - Single-beam sonar is now supported for post-processing data import and real-time data acquisition, providing you with an inexpensive bathymetry option in SonarWiz.</li> </ol> <p><b>All SonarWiz 6 enhancements are also included SonarWiz 7.</b></p> <p>Click the link below, for more information:</p> <p><a href="#"><u>Introducing SonarWiz 7 !</u></a></p>
2.2 General Enhancements	<p>Save Mosaic As Tiles - image export has been enhanced:</p> <ol style="list-style-type: none"> <li>1. with custom export sizing options, allowing you to anchor and image corner to a known survey point or grid boundary line.</li> <li>2. Exported TIFF is compressed by default, but you can override it.</li> <li>3. Finally, the tiles export folder opens at the end, so you</li> </ol>

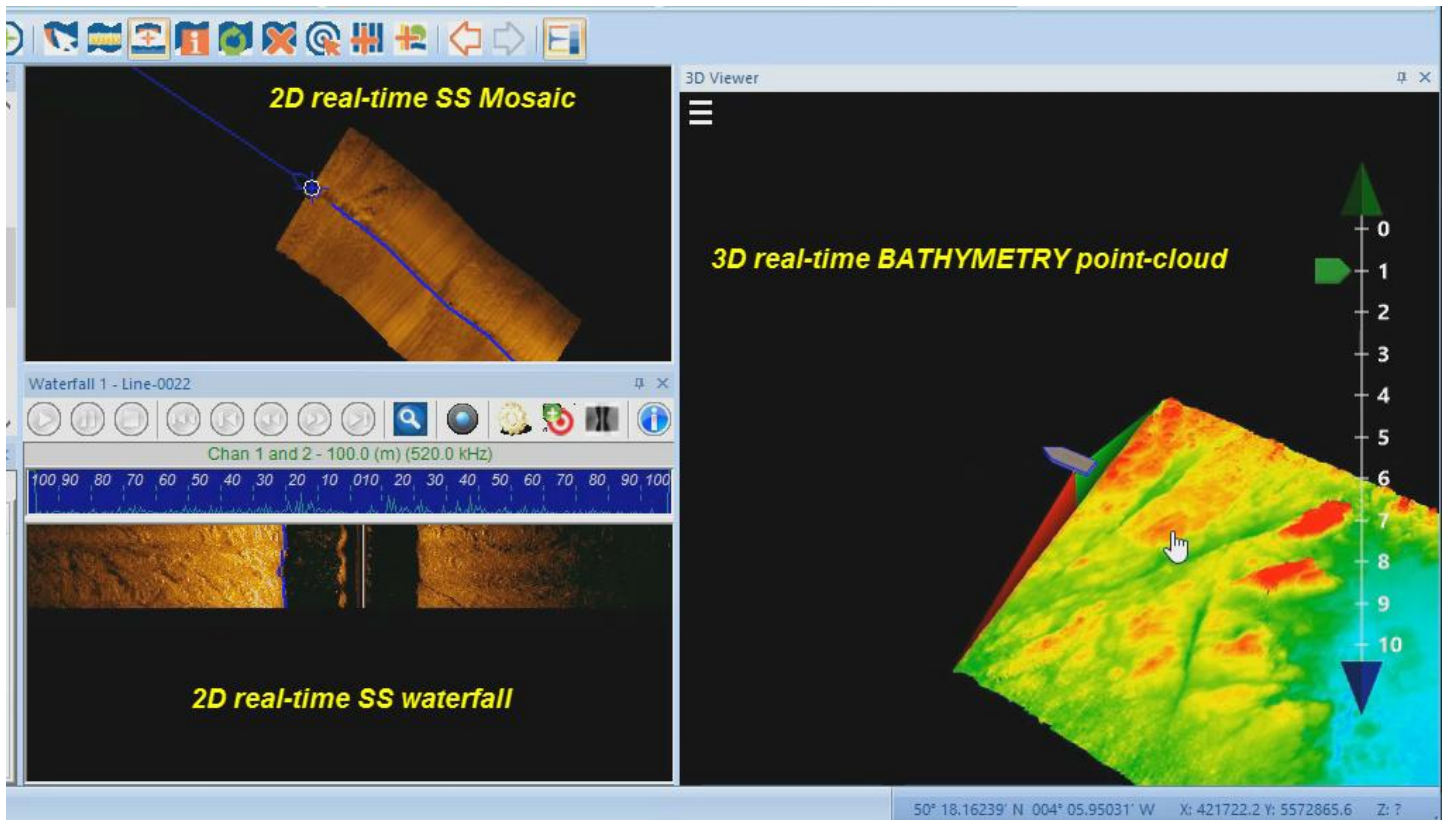
	can easily find the batch of tiles created.
2.3 Sidescan post-processing	<p>1. With a bathymetry license, now we offer a sidescan-view of Kongsberg MBES backscatter imagery (e.g. packets 83, 88, 89)</p> <p>2. Try the new SonarWiz 7 seabed classification! A new Seabed Classification User Guide may be found in the DOCS folder of your SonarWiz 7 installation Program Files folder, or downloaded here:</p> <p><a href="#">Seabed Classification - New User Guide</a></p>
2.4 Real-time Data Acquisition	<p>1. For SonarWiz 7, ALL the real-time servers were upgraded with 2 enhancements: 1. code-signing for digital signature security, and 2. SonarWiz 7 installation folder selection by default, with the option to override and install in a SonarWiz 6 folder. This makes it easier to set up for SonarWiz 7 real-time survey work.</p> <p>2. Single-beam data recording is now supported, as an inexpensive bathymetry options for mapping seafloor surfaces, using our extensive gridding options.</p>
2.5 Bathymetry post-processing	<p>We have added support for reading navigation from different places in which it is stored in XTF files when importing HYPACK or SonarWiz 7K format bathymetry. This continues our support for XTF file-format diversity and ease of import in SonarWiz.</p>
2.5 Sub-bottom post-processing	<p>We have really enhanced the sub-bottom "intersections" annotation options, to support symbol and text display control options, to be much more like our support for features and contacts.</p>

## 2.1 SonarWiz 7 - New Integrated 3D Viewer

In addition to a classic 2D view of your sonar data, SonarWiz 7 provides a full integrated 3D viewer option, which supports display of post-processed imagery, or real-time imagery, for sidescan, sub-bottom, single-beam, or multi-beam data. 3D scene data selection is independent of the 2D map view content, but is visible right alongside it. You can zoom, pan, rotate, and vertically scale the scene data:

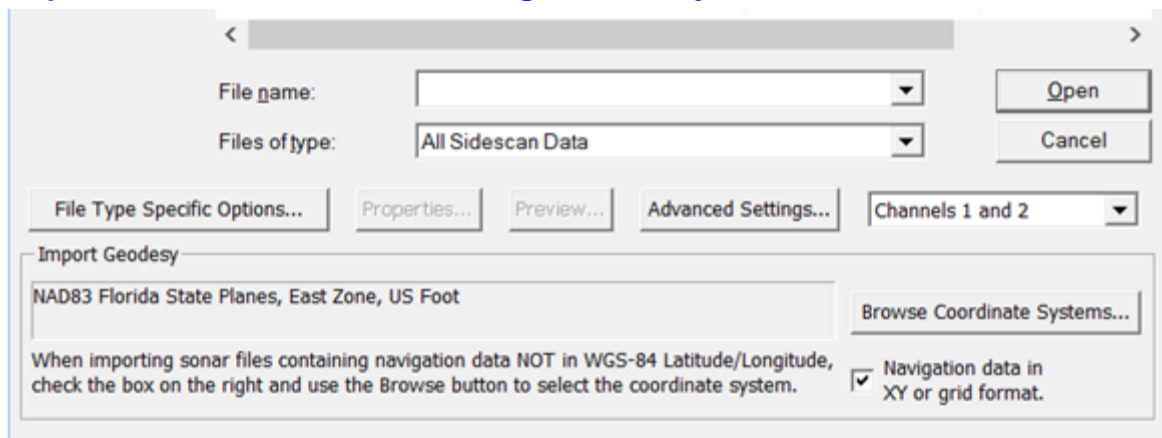


In a real-time scenario, you might dock a sidescan real-time mosaic, 2D real-time SS waterfall, and real-time 3D bathymetry viewer for watching the SS data and bathymetry point-cloud record, at the same time:



## 2.2 High-resolution Sidescan Import Data Format Support

Sidescan data format is enhanced to full 32-bit floating-point resolution capability, making the import and view cycle easier than ever. As you can see below, the sidescan import dialog has been **simplified to eliminate most of the gain and adjustment controls**:

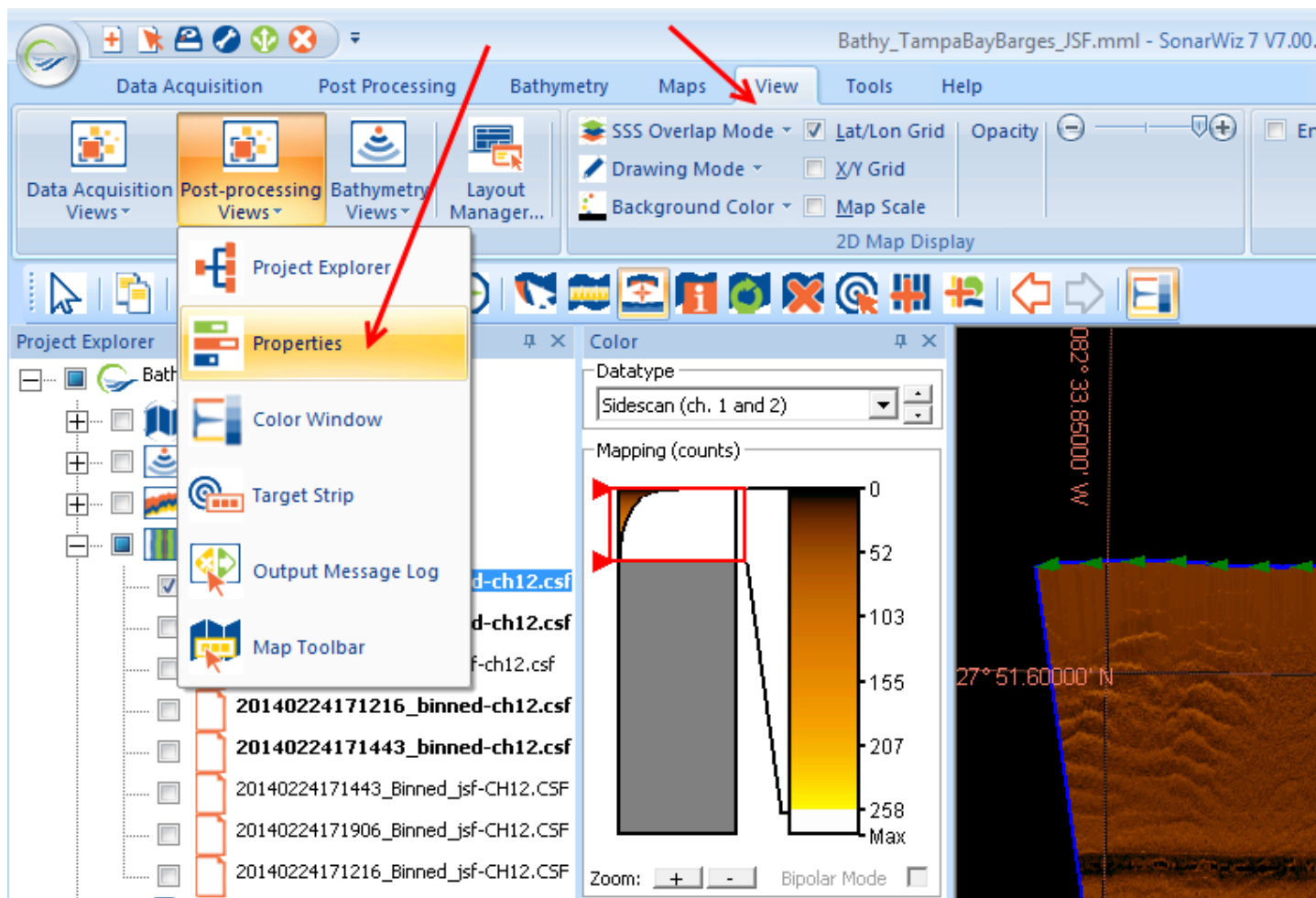


You no longer need GAIN or JSF scalar and such during import, but will use the new COLOR WINDOW to scale data to color palette. **Individual files can still be adjusted AFTER IMPORT** using per-file controls such as AGC, BAC, TVG, EGN and nadir filter.



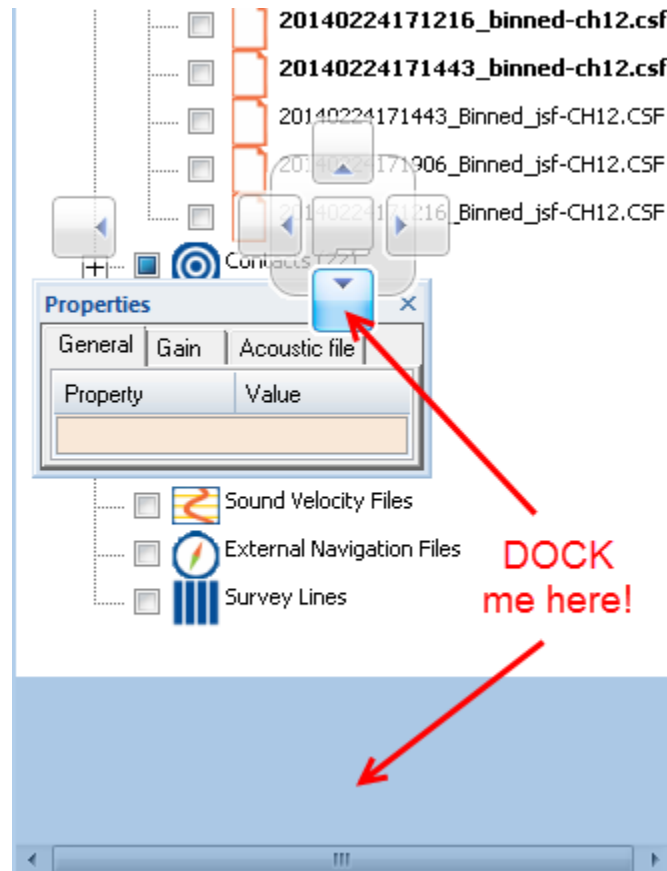
### 2.3 SonarWiz 7 - Visible PROPERTIES control / viewing dialog

This new feature presents viewing AND control options to the top-level GUI by presenting information that previously resided in subordinate dialogs.

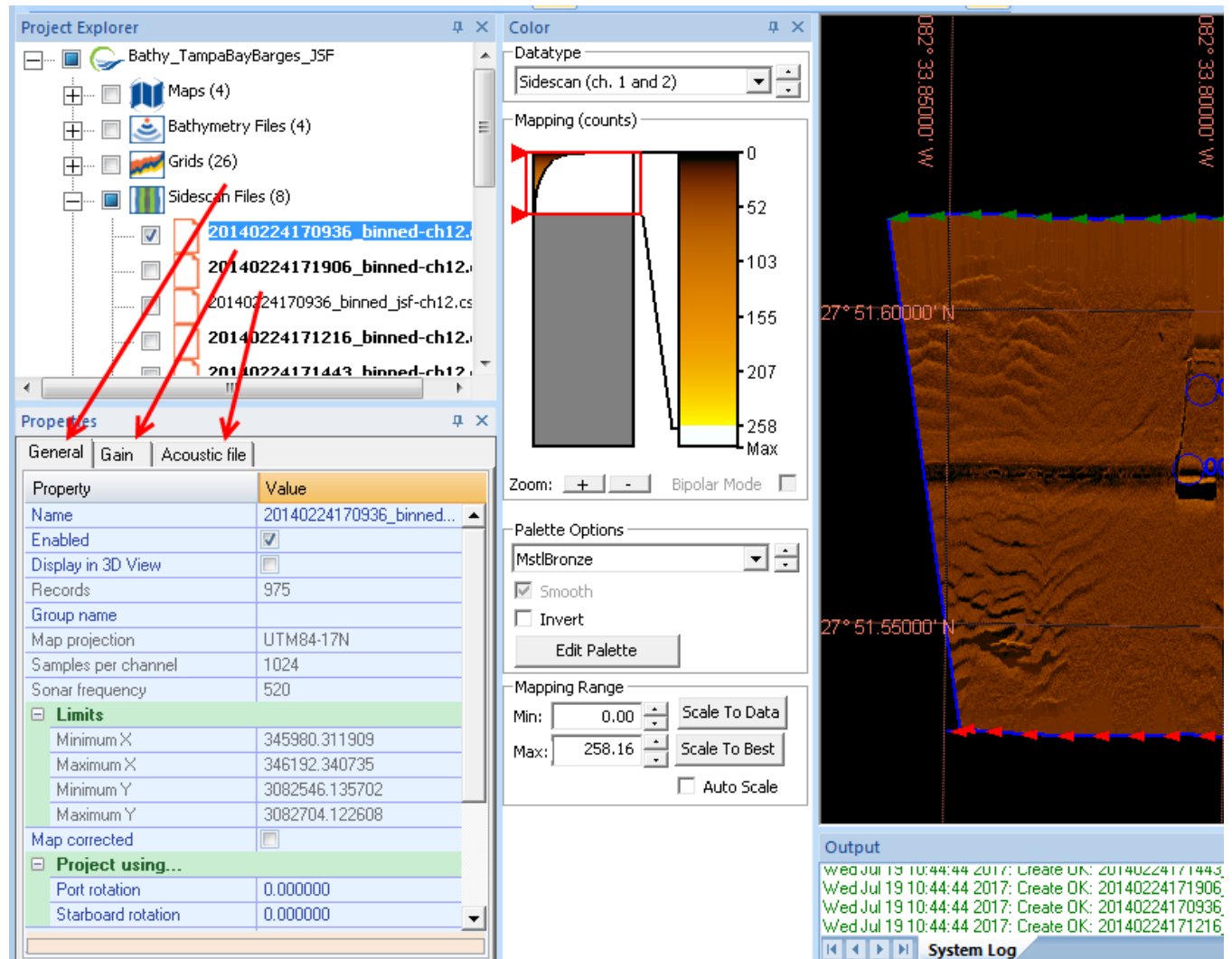


Dock it to the left under your project explorer:



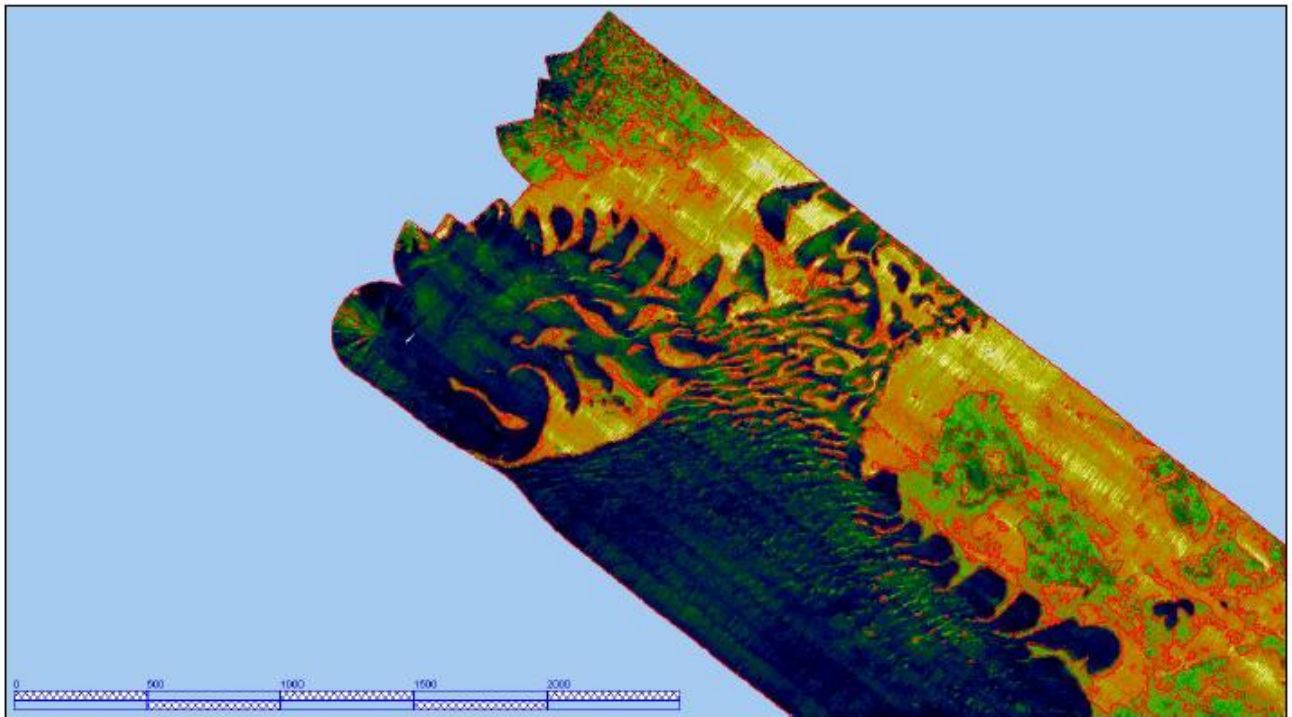


This new dialog option gives you not only view of previously subordinate dialog info, but allows you to **control and change what you see**, too! Select any Project Explorer object to view and control its properties:



## 2.4 Seabed Classification - totally revised in SonarWiz 7

This is a complicated feature set, but it just got easier (and better) !



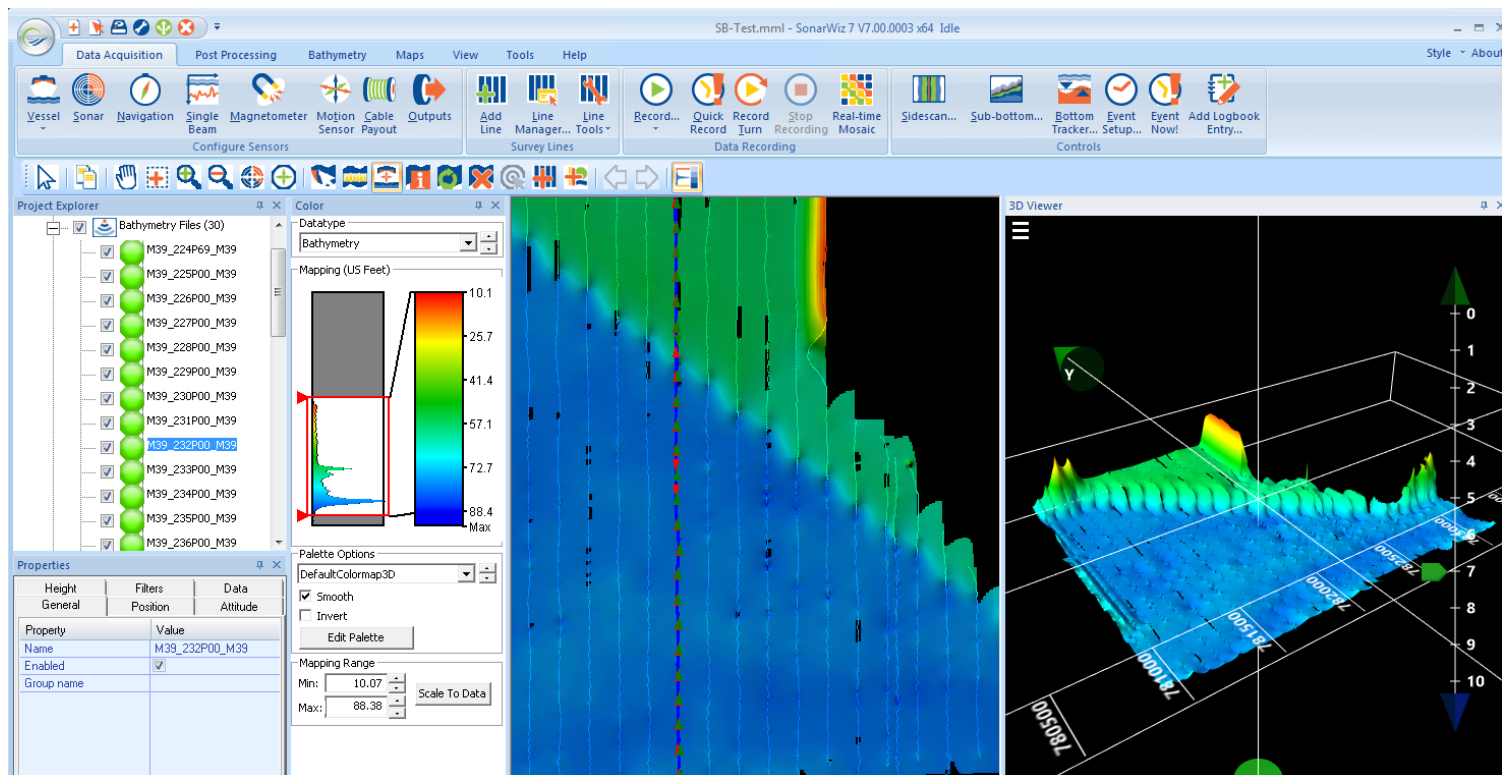
*Figure 1- Example of sidescan mosaic characterized into similar acoustic classes using the Seabed Characterization Tool in SonarWiz 7*

SonarWiz 7 can help classify your **backscatter or sidescan data** like never before. Open the new User Guide to get started:

[Seabed Classification - New User Guide](#)

## **2.5 Single-Beam - New import and real-time support data format**

Single-beam sonar is now supported is for post-processing data import and re-time data acquisition, providing you with an inexpensive bathymetry option in SonarWiz. The data imports easily, and color-scaled depth view is available in 2D or 3D:



### 3 Learning More

Chesapeake Technology maintains a public web-site at [www.chesapeaketech.com](http://www.chesapeaketech.com), where we highlight recent advances in the SonarWiz software. We provide a portal there, to our full suite of SonarWiz tutorial and reference videos:

<https://www.chesapeaketech.com/videos/>

Getting the best use of your SonarWiz software these days means keeping up! Watch for NEWS about the software enhancements which occur regularly at 2-week intervals. We report all changes in the VERSION HISTORY for each new SonarWiz version release, here:

[www.chestech-support.com/ctisupport/versionHistory.asp?p=swiz6](http://www.chestech-support.com/ctisupport/versionHistory.asp?p=swiz6)

No login is required to access this change news!

Got help? Log in to [www.chestech-support.com](http://www.chestech-support.com) and click **\*REPORT A BUG** - we'll help!